

SWITCHCOM

THE POWER IS YOURS



who we are

We are a Sydney based Electrical Company that appreciates quality, reliability and a seamless handover. We thrive in Commercial, Hospitality & Industrial industries and understand all your business' electrical requirements and needs.



our team

Our talented team of professionals are skilful, reliable and efficient. We care deeply about the quality of our work and maintain strict quality controls to ensure that your business gets the best. Here at Switchcom, safety is not taken for granted and all team members adhere closely to the Workplace Health and Safety standards.



our relationship with you

We take pride in our reliability. We are experts in the field and are committed to providing your business with efficient and effective solutions both within or outside of business hours. At Switchcom, communication is kept open and we believe in active conversation from planning to handover.





our vision

We are Sydney's best in commercial and hospitality electrical & security contracting. Through our expertise, proficiency, and finesse, we transform our clients' vision into reality.



our mission

We are a highly skilled team of licensed professionals who understand the needs of our clients and help make their projects easy for them. We are consistent and reliable. Through our extensive industry experience we preserve the delicate balance between value, quality and efficiency. Our work makes our clients proud.




our culture

Integrity • Reliability • Finesse • Innovation
Gratitude • Encouragement • Connection

Santa Catarina

A place for everyone; for mezcal sommeliers as well as for party goers and casual walk-by's. The exposed materials are a reminiscent of the rustic tools of mezcal production and traditional rustic kitchens, which welcomes everyone to this eclectic combination of authenticity, mystery and elegance. The design principles communicate the essence of the magical town through a premium and sophisticated lens that expresses the authenticity and value of every-single touch point of Santa Caterina.

 Hospitality fit out

 7-27 Circular Quay West,
2000 The Rocks NSW





integrity

We are a trustworthy team of professionals. We maintain the highest level of integrity in everything we do.

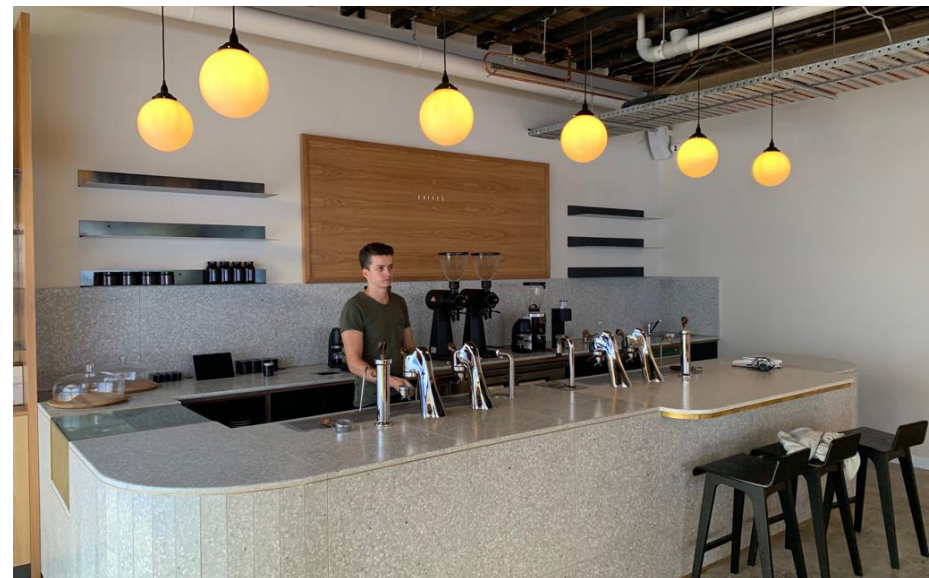
– **switchcom culture**

Went to see the Gypsy

Went to See the Gypsy in Alexandria is 10 times bigger than the Potts Point original, Gypsy Espresso – In the space that once housed the original Mitchell Road Antique and Design Centre, it's got soaring warehouse ceilings that are supported by exposed steel beams, the colour scheme is blond timber, black and white, and there are so many tables that the venue is better described as a canteen than a cafe.

 Hospitality fit out

 76 Mitchell Rd, Alexandria NSW 2015





connection

We illuminate the importance of a healthy and positive team environment. We care about what each person can contribute. We practice active listening in creating an encouraging and fulfilling workspace for everyone.

– **switchcom culture**

Londres 126

There's no hospitality group in Sydney as experienced with Mexican cuisine as Milpa Collective. With venues Calita, La Palma, Sonora, Taqiza, Carbon and Mux under their aprons, it was only a matter of time before they extended the collection. The team recently introduced us to Santa Catarina in the CBD and Casa Merida in Potts Point.

They've now turned their attention to Sydney's newest dining precinct, Quay Quarters Lane, with the addition of Londres 126. Each venue represents a different region of Mexican cuisine and culture, and Londres 126 takes on the bustling dining scene and nightlife of Mexico City.



Hospitality fit out



8 Loftus St, Sydney NSW 2000



Guzman y Gomez

Lively counter-serve chain for classic tacos and burritos, plus frozen margaritas and Mexican beer.

 Hospitality fit out

 566-594 Princes Hwy, Kirrawee NSW 2232





encouragement

We support and respect each other in every aspect of our day to day, whether it be professional or personal. We commend a job well done and always inspire growth and opportunities for success.

– **switchcom culture**

Ribs & Burgers

More than a cut above your average burger joint, this boutique chain of rib and burger deliciousness has outlets right around Australia. Ribs & Burgers is an Australian success story in innovative, casual dining. The open plan eateries are vintage in style with subway tiles and pendant lighting.

 Hospitality fit out

 77-105 Victoria Rd, Drummoyne NSW 2047

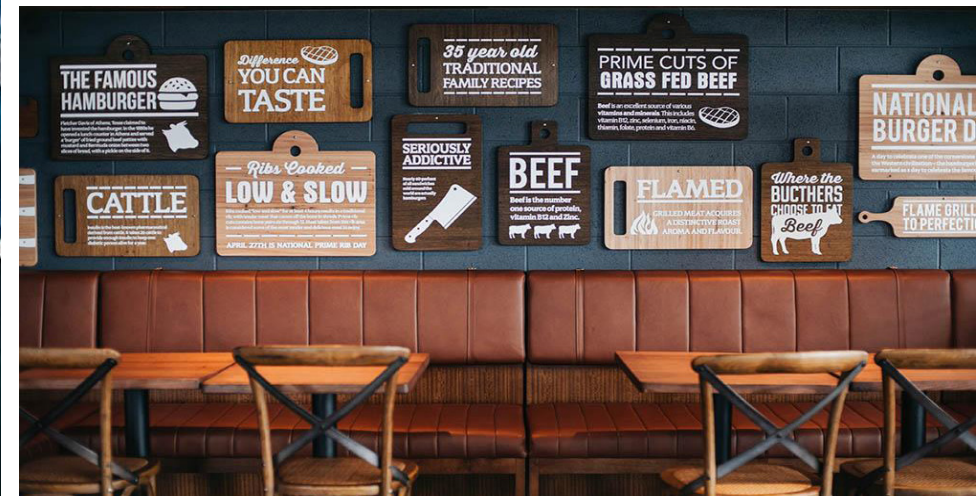




reliability

We are consistent and dependable.
We stand by our commitments.

– **switchcom culture**





KENZO

French fashion brand KENZO has arrived in Sydney, opening the doors of its first NSW store in the iconic Queen Victoria Building. Their store features debut collections by head designer Felipe Oliveira Baptista including men and women's ready-to-wear clothing, accessories, footwear and kidswear.

 Retail fit out

 455 George St, Sydney NSW 2000

finesse

We complete each task as though it were personal. We take pride in our expertise and professionalism. We value our craftsmanship.
– **switchcom culture**

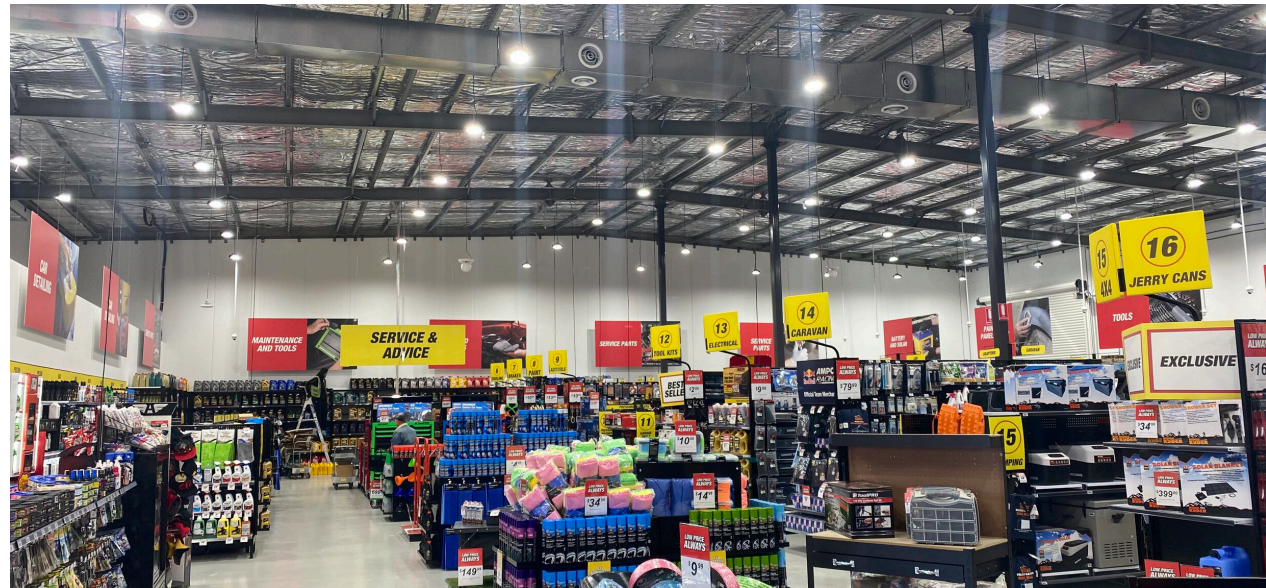


Supercheap Auto

Supercheap Auto is Australia's leading auto spares, parts and accessories retailer stocking a variety of car batteries, air filters, coolants and more online or in stores nationwide.

 Retail fit out

 11 John Hines Ave,
Minchinbury NSW 2770



Bionik Wellness

Science based wellness – Bionik Wellness offers a wellness experience like no other. Expect luxury, world-leading technology and a personalised lifestyle offering.

 Health and Wellness Fitout

 2/410 Crown St, Surry Hills NSW 2010





innovation


We believe in progress. We encourage improved and brighter ways of doing things in every aspect of our day to day.

– **switchcom culture**

6HEAD

6HEAD is the ultimate steakhouse experience set in the most iconic location in the world. With unparalleled views of the Sydney Harbour Bridge, Opera House, and Harbour we are located in the Campbell's Cove Stores. The modern Australian menu was curated by Chef Sean Hall and focuses on premium Australian produce highlighting quality steaks. Paired with our extensive Wine List, offers you the most amazing dining experience available in Sydney.

 Hospitality fit out

 7-27 Circular Quay West,
2000 The Rocks NSW





gratitude

We appreciate the position we are in. We are grateful for what we have and the opportunities we share to help each other to be our best.

– **switchcom culture**





MECCA

One-stop beauty shop Mecca launched its latest store at Broadway shopping centre. The Aussie-grown beauty empire is known for stocking cult beauty brands. The store will be a combination of Mecca's Cosmetics and Maxima concepts.

 Retail fit out

 1 Bay St, Ultimo NSW 2007



visit our website

To see more of Switchcom's
past projects – **[switchcom.com.au](https://www.switchcom.com.au)**



our clients



mail us

PO Box A19
Enfield South,
Sydney NSW 2133



chat with us

Rocco Pulitano
Operations Director
rocco@switchcom.com.au
+61 405 694 979



we're online

@switchcomelectric • *insta*
@switchcomelectric • *fb*
@switchcom-electric • *linkedin*